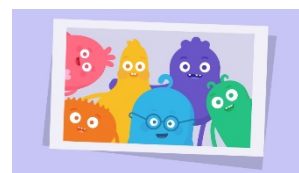


While you are working at home, please remember you are a Junior School student who models the school values and aims to be the best learner possible.



How does your day look?

- Activities for the day or week will be posted at 8:30 am
- Ensure you have passwords and access to a device at some point between 9:00am and 12:00 and again between 1:00 pm and 3:00pm
- By 9:00 am you should have signed in and be ready to work.
- Work through your assigned tasks and submit any work, which is required.
- When possible check recorded lessons and join in live conversations with your teacher.
- Remember to take regular breaks and move around.



Where Should I do my Work?

- Work in an area, which provides you with the best learning environment.
- Remove any distractions and keep your work area tidy.
- If you are sharing a work area, be respectful of others.
- When participating in a video conference have an adult nearby. Please be dressed tidily and remember to use your best manners.



What do I do if I have a problem?



- If you have, a technical issue ask someone at home to help you. If you cannot solve the problem, contact KWS ICT department via email (servicedesk@kws.nsw.edu.au) and wait patiently for them to assist you.
- If it is a schoolwork issue, reread the question, watch any teacher instructions again, and check the forum questions. If your query still is not solved, post a question in the forum or ask the teacher your question in the live chat.
- If you have question outside the 9:00 am – 3:00pm day your teachers will respond as soon as possible.

Remember to do your best and try to remain calm and you will enjoy your learning. Your teachers will be in touch with you regularly. Please communicate with your teachers and let them know how you are going. Finally, remember that while we are all missing being at school it will not last forever so be calm, be patient, be involved in your learning and the time will pass quickly.